

- Heavy duty aluminium frames ideal for areas with high load capacity requirements
- Installation before completion of floor finish
- Visible aluminum surfaces with non-skid grooved surface
- Final assembly flush with floor surface enabling smooth passing
- A.D.A. compliant



↔ Thermal movement

 Suitable for storage and industrial areas with trucks & forklift trucks traffic.

Point Load capacity test results for non-moving load applied continuously:

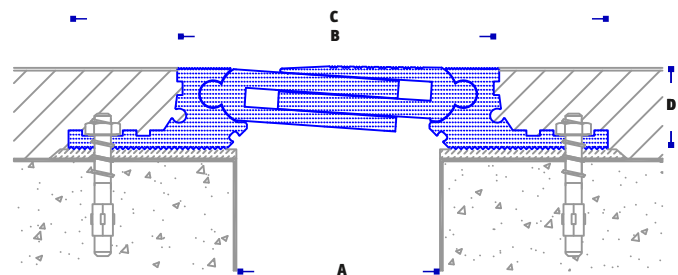
> 2F-HD 50 : 113kN

> 2F-HD 75 : 110kN

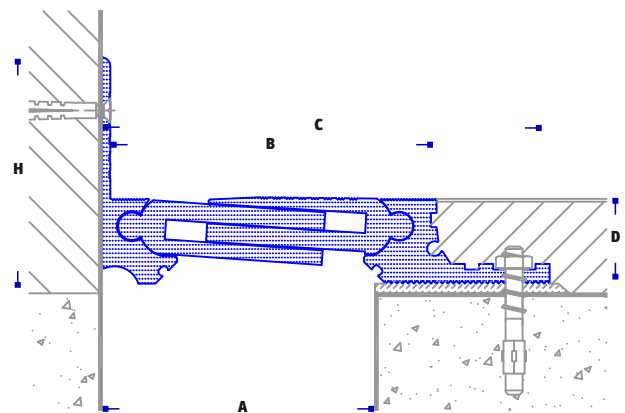
> 2F-HD 100 : 101kN

(Third party test report available)

2F-HD



2F-HD/C



Materials:

- - Extruded aluminium ASTM B 221, alloy 6063-T5 in standard mill-finish (anodic treatment upon request).
- Separate water-barrier and fire-barrier products available.

TYPE	JOINT WIDTH 'A'	EXPOSED SURFACE 'B'	TOTAL PROFILE WIDTH 'C'	FRAME HEIGHT 'D'*	WALL FRAME HEIGHT 'H'	TOTAL MOVEMENT
2F-HD 50	50	84	160	28	-	30
2F-HD 75	75	130	210	30	-	50
2F-HD 100	100	150	240	30	-	60
2F-HD 150	150	167	275	30	-	60
2F-HD/C 50	50	78	115	28	75	20
2F-HD/C 75	75	115	158	30	75	35
2F-HD/C 100	100	138	194	30	75	50
2F-HD/C 150	150	156	258	30	75	60

*Profile height D can be increased by means of layers of screed / levelling mortar or adjustable wads M10-M12

Dimensions in mm

Installation guidelines:

- Separate installation instructions are available for each product series
- Installation instructions must be carefully reviewed prior to starting work.
- Additional, tailor-made instructions can be provided upon request.
- Rigid fixing substrate is of prime necessity for all applications.
- Where separate water-barrier or fire-barrier products are required, install these first following respective installation instructions.

Packaging:

- Aluminium profiles in standard 4m long pieces.
- Custom lengths available upon request.

Product guarantee:

ACP HELLAS supplies products that comply with the properties included in the current catalogues & datasheets.

In the unlikely event that products supplied are proved not to comply with these properties, then we will replace the non-compliant product or refund the purchase price. ACP HELLAS does not guarantee the installation of the products as it does not have control over the installation or end use of the products.

Any suspected defects must be reported to ACP-HELLAS in writing within twenty (20) working days of being detected. ACP-HELLAS makes no warranty as to merchantability or fitness for a particular purpose and this warranty is in lieu of all other warranties express or implied.

ACP-HELLAS shall not be liable for damages of any sort including remote or consequential damages, down time, or delay.

Storage & handling:

- Do not expose parts should not be exposed to direct sunlight or weather conditions. Recommended storage temperature: 10°C - 28°C.
 - Place parts off the ground and keep them protected from construction activities.
 - Handle parts with proper care so as not to injure the finished (exposed) surfaces.
 - Ensure that after installation the expansion joint covers are protected from damage due other construction activities in nearby areas.
 - Refer to our separate sheet 'Care & Maintenance Instructions' for cleaning guidelines.
- > For storage and handling instructions of any other related materials (mastic sealants, chemical anchors etc) refer to related manufacturer datasheet.

Health and Safety:

- These products are for industrial use only by trained operatives.
- They are pre-manufactured solid items that do not contain or release any chemicals under normal conditions of use.

ACP HELLAS LTD

Mylopotamou 24 Str. Athens 115 26, GREECE
tel: +30 210 6928309, +30 210 6917665
fax: +30 210 6928310

info@acp-hellas.com
www.acp-hellas.com



copyright 2018 ACP HELLAS LTD